

IT 100 E IT 150 E

Standard equipment

- 2WD Electric traction motor
- Proportional MOSFET controls
- Simultaneous functions control (IT 150 E)
- Parking brakes with hydraulic release
- Mechanical wheel drive release for emergency hauling
- Cushion non marking tires 530 x 175 (IT 100 E), 620 x 200 (IT 150 E)
- Pothole protection (IT 100 E)
- Traction battery 48V (8x6V) - 300Ah (C5)
- Battery charger with automatic switch-off, 48V - 30A
- Battery control system with automatic cut out protection
- Battery centralized refill (IT 100 E)
- Battery disconnection plug
- 355° turret rotation
- Basket automatic levelling
- Basket hydraulic rotation
- Overload sensor on basket
- Inclinometer with motion cut out and alarms
- Cylinder holding valve
- Manual emergency lowering device
- Double controls at basket and ground
- Horn, hour meter and flashing beacons
- 230V cable prearranged up to the basket
- CE – EN280 marking

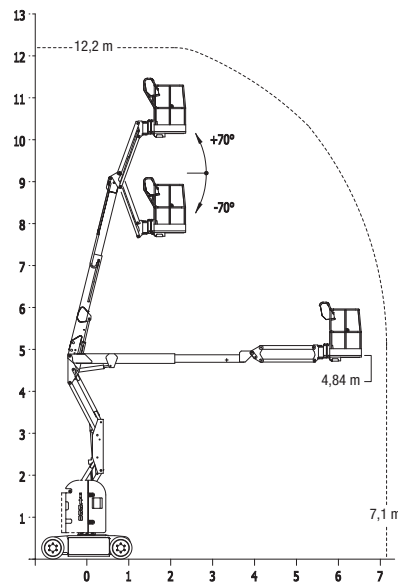
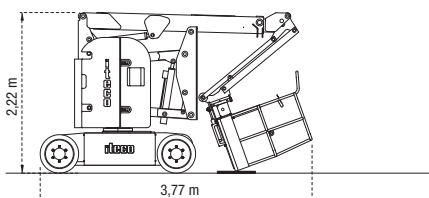
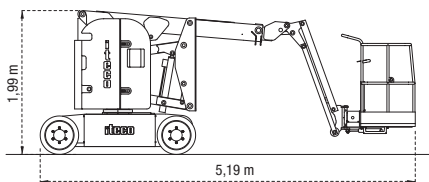
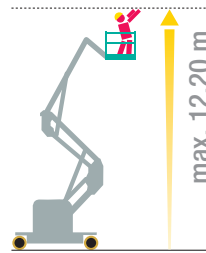
Optionals

- 230V plug, socket and safety differential switch
- Air compressed line up to the basket
- Work light at basket

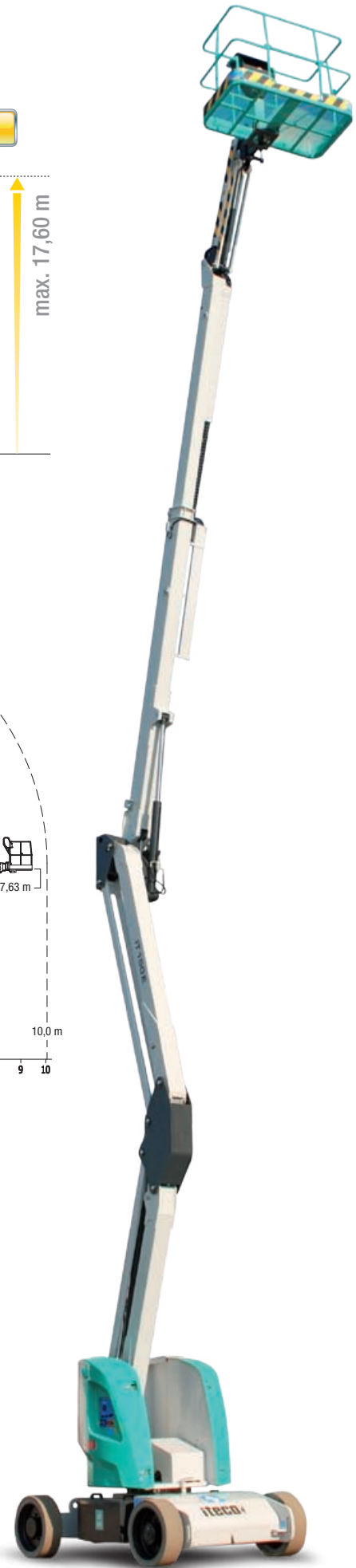
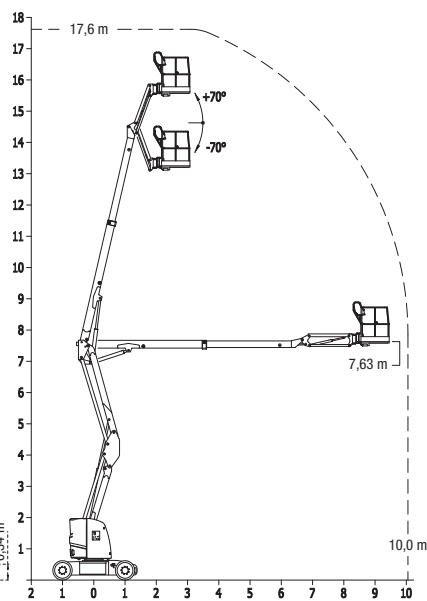
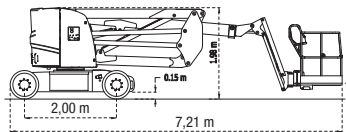
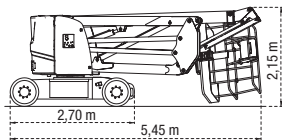
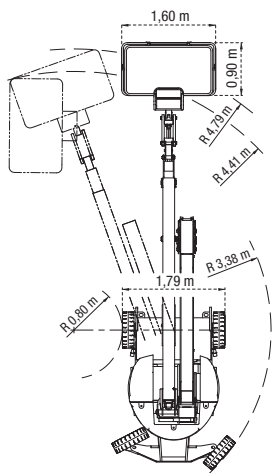
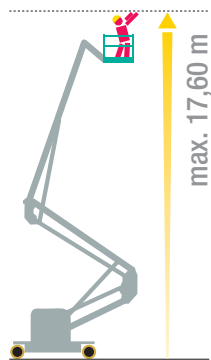
Benefits

- ✓ Drivable at full height & outreach without any restriction.
- ✓ Electric drive motors: less consumption, more autonomy, and more sensitive manoeuvrability
- ✓ Zero tail swing
- ✓ Working height and outreach at the top for its class
- ✓ Electronic proportional controls for an enhanced motion efficiency
- ✓ Simultaneous functions control for ease and precision of positioning (IT 150 E)
- ✓ Shortened overall transport length thanks to retractable basket
- ✓ Tight turning radius
- ✓ Outdoor use allowed

IT 100 E



IT 150 E



		IT 100 E	IT 150 E
--	--	-----------------	-----------------

Working height	mm	12200	17600
Basket height	mm	10200	15600
Machine width	mm	1200	1790
Basket dimensions	mm	1170 x 750	1600 x 900
Turret rotation		355°	
Basket rotation		140°	
Basket levelling		automatic	
Capacity		220	
Controls		proportional with diagnostic	
Tail swing		zero	
Battery voltage	V	48	
Battery capacity	Ah	300 (C5)	
Traction speed	km/h	4	
Traction speed (safety)	km/h	0,6	
Tyres	mm	530 x 175	620 x 220
Total weight	kg	6840	7900
Gradeability		25%	20%
Internal steering radius	m	1,70	0,80
External steering radius	m	3,50	4,79 (4,41)